



STORMSHIELD



TECHNICAL NOTE

STORMSHIELD NETWORK SECURITY

PROTECTING ACCESS TO THE CONFIGURATION PANEL OF THE UEFI ON SNS FIREWALLS

Document last updated: May 21, 2025

Reference: [sns-en-UEFI_protection_technical_note](#)



Table of contents

Change log	3
Getting started	4
Requirements	5
Required equipment	5
SN-XS-Series-170	6
SN-S-Series-220 and SN-S-Series-320	9
SN-M-Series-520	12
SN-M-Series-720 and SN-M-Series-920	15
SN1100 and SN3100	18
SN-L-Series-2200 and SN-L-Series-3200	21
SN-XL-Series-5200 and SN-XL-Series-6200	24
SNi10	27
SNi20	30
Further reading	33



Change log

Date	Description
May 21, 2025	- Requirement regarding the installation of a driver added in the "Requirements" section
December 03, 2024	- SN-XS-Series-170, SN-L-Series-2200, SN-L-Series-3200, SN-XL-Series-5200, SN-XL-Series-6200 and SNi10 firewall models added
May 25, 2023	- SN-S-Series-220, SN-S-Series-320, SN-M-Series-520, SN-M-Series-720 and SN-M-Series-920 firewall models added
June 13, 2022	- New document



Getting started

This technical note explains how to enable and disable password protection on SNS firewalls' UEFI control panel.

For security reasons, before enabling Secure Boot, you are advised to protect access to the SNS firewall's UEFI control panel with a password.

If Secure Boot is enabled by default on the SNS firewall, we recommend protecting access to the UEFI's control panel as soon as possible.

IMPORTANT

The password you set must be kept in a safe and secure location. If you misplace your password, you will no longer be able to update the SNS firewall's UEFI. Stormshield will not be able to help you recover this password.



Requirements

This section sets out the requirements for enabling and disabling password protection in the UEFI control panel on SNS firewalls.

Required equipment

- A computer with a terminal emulator installed, e.g., Putty, and the [PL23XX USB-to-Serial driver](#) installed if the SNS firewall is connected over a USB-C port.
- For SN-XS-Series-170, SN-S-Series-220, SN-S-Series-320, SN-M-Series-520, SN-M-Series-720, SN-M-Series-920 and SNi10 firewalls: a USB-A to USB-C cable provided with the SNS firewall.
- For SN1100, SN3100 and SNi20 firewalls: an RJ45 to RS232 serial cable provided with the SNS firewall, and if necessary, an RS232 to USB adapter on the computer side.
- For SN-L-Series-2200, SN-L-Series-3200, SN-XL-Series-5200 and SN-XL-Series-6200 firewalls: a USB-A to USB-C cable provided with the SNS firewall, or an RJ45 to RS232 serial cable provided with the SNS firewall, and if necessary, an RS232 to USB adapter on the computer side.

NOTE

Depending on the SNS firewall model, the UEFI control panel may also be displayed directly on a screen. Connectors vary according to the SNS firewall model:

- SNi20: micro HDMI connectors,
- SN1100, SN3100, SN-L-Series-2200 and SN-L-Series-3200 firewalls: HDMI connectors,
- SN-XL-Series-5200 and SN-XL-Series-6200 firewalls: VGA connectors.

A USB keyboard must also be connected to the SNS firewall.

Proceed to the section of the technical note according to the relevant SNS firewall model.



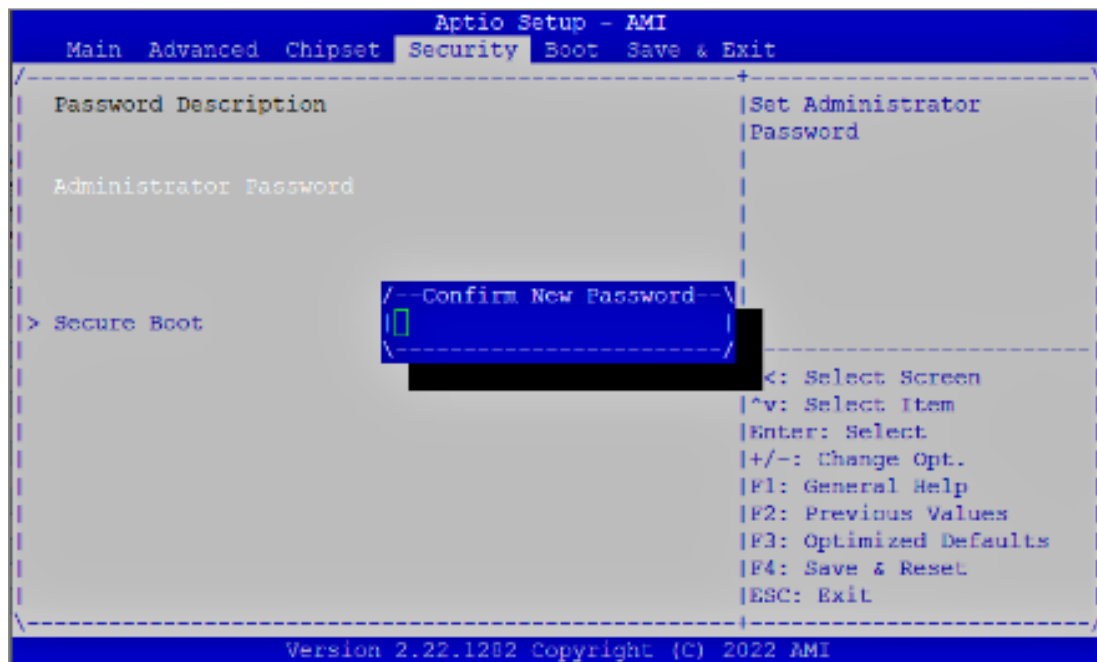
SN-XS-Series-170

Enabling password protection in the UEFI control panel

1. Connect the computer to the SNS firewall using the USB-A to USB-C cable.
2. Open the terminal emulator and enter the serial port and baud rate [115200].
3. Start or restart the SNS firewall and immediately press **[Del]** several times to stop the SNS firewall startup sequence.
4. Go to the **Security** tab by using the arrow keys.
5. Select **Administrator Password** and press **[Enter]**.
6. In the *Create New Password* window, enter a password of your choice and press **[Enter]**.
7. In the *Confirm New Password* window, confirm the password and press **[Enter]**.

! IMPORTANT

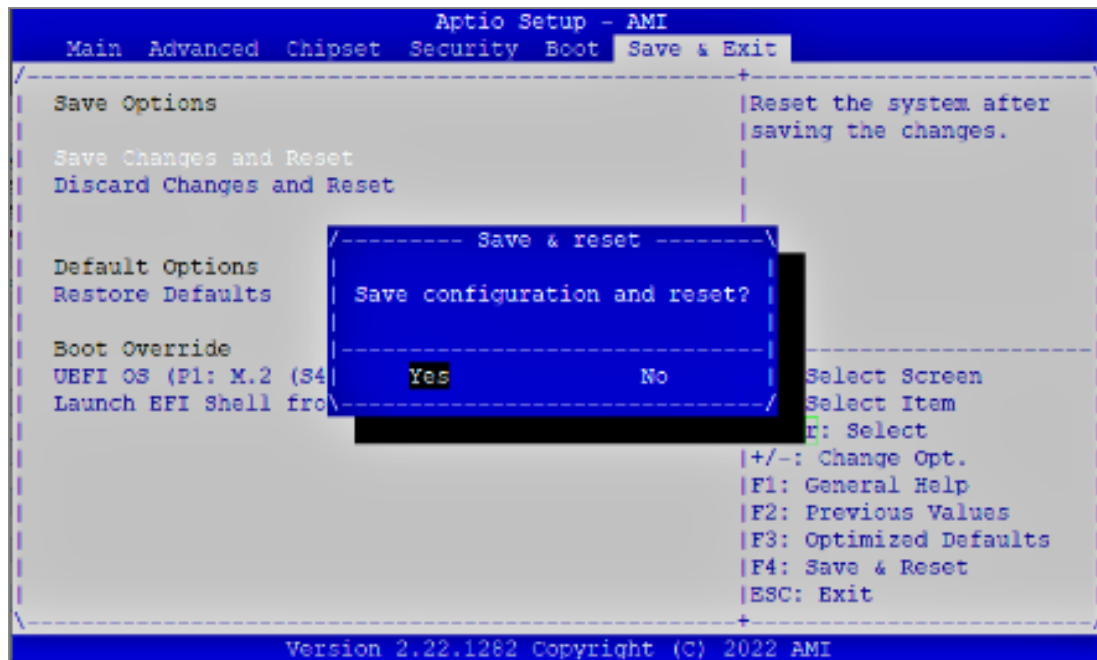
The password you set must be kept in a safe and secure location. If you misplace your password, you will no longer be able to update the SNS firewall's UEFI. Stormshield will not be able to help you recover this password.



8. Press **[Esc]** and go to the **Save & Exit** tab.
9. Select **Save Changes and Reset** and press **[Enter]**.



10. In the *Save & Reset* window, select **Yes** then press **[Enter]**.

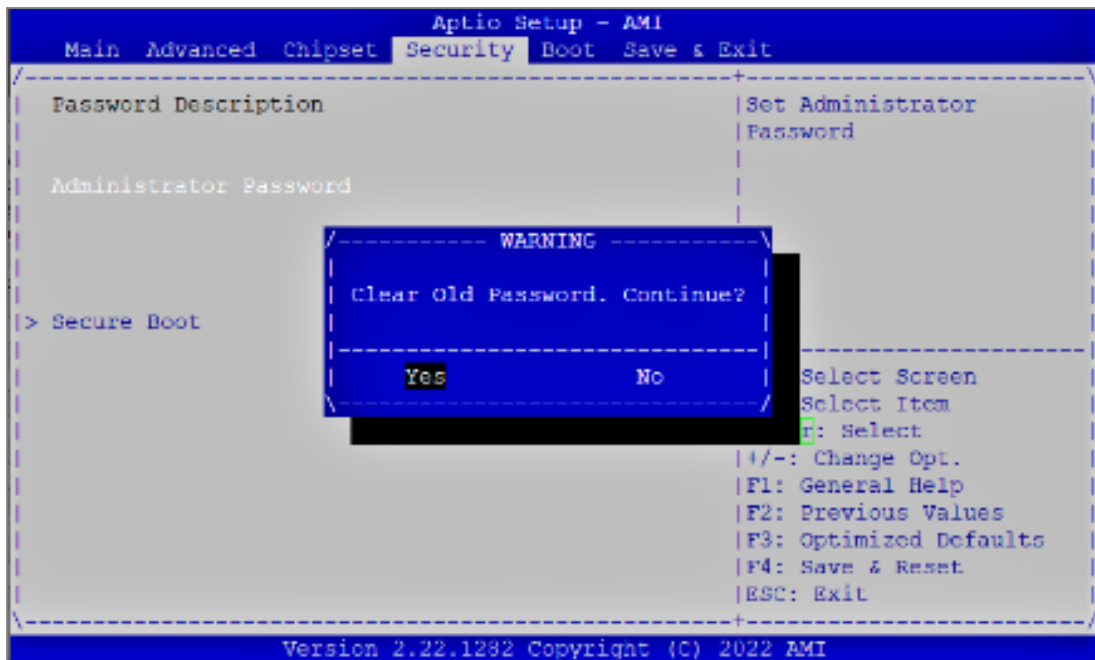


Disabling password protection in the UEFI control panel

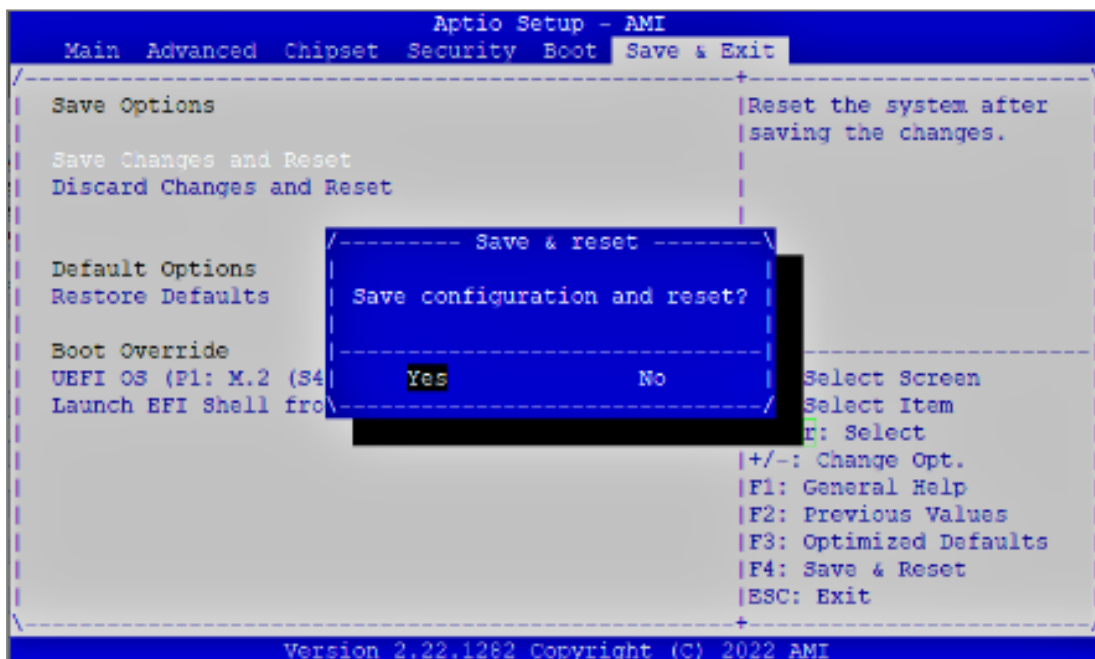
1. Connect the computer to the SNS firewall using the USB-A to USB-C cable.
2. Open the terminal emulator and enter the serial port and baud rate (115200).
3. Start or restart the SNS firewall and immediately press **[Del]** several times to stop the SNS firewall startup sequence.
4. Enter the password to access the UEFI control panel.
5. Go to the **Security** tab by using the arrow keys.
6. Select **Administrator Password** and press **[Enter]**.
7. In the *Create New Password* window, leave the field empty and press **[Enter]**.



8. In the **WARNING** window, select **Yes** then press **[Enter]**.



9. Press **[Esc]** and go to the **Save & Exit** tab.
10. Select **Save Changes and Reset** and press **[Enter]**.
11. In the **Save & Reset** window, select **Yes** then press **[Enter]**.





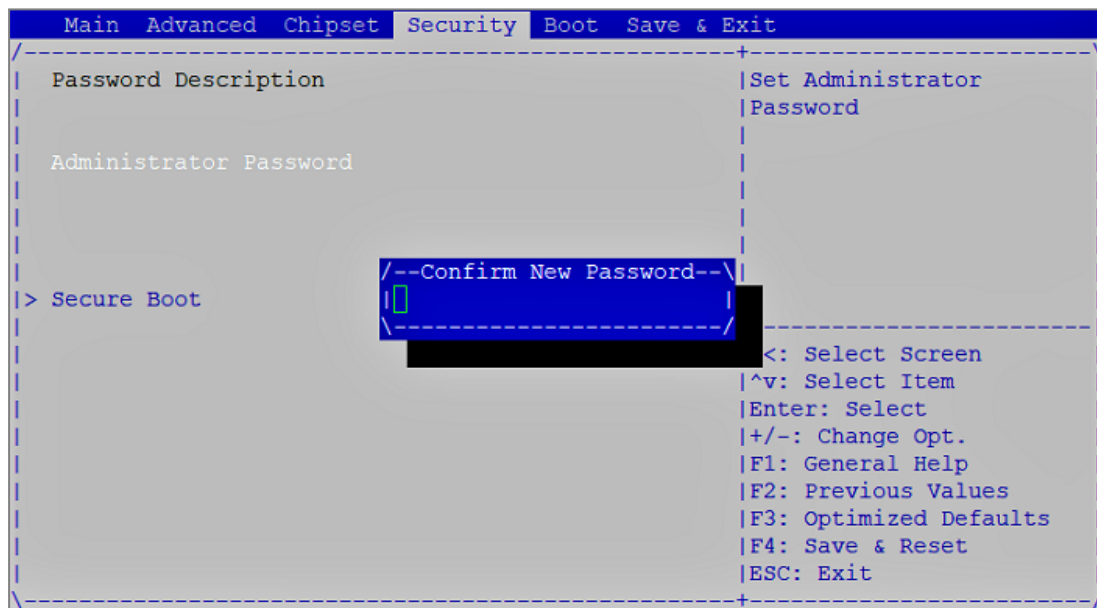
SN-S-Series-220 and SN-S-Series-320

Enabling password protection in the UEFI control panel

1. Connect a computer to the SNS firewall using a USB-A to USB-C cable.
2. Open the terminal emulator and enter the serial port and baud rate [115200].
3. Start or restart the SNS firewall and immediately press **[Del]** several times to stop the SNS firewall startup sequence.
4. Go to the **Security** tab by using the arrow keys.
5. Select **Administrator Password** and press **[Enter]**.
6. In the *Create New Password* window, enter a password of your choice and press **[Enter]**.
7. In the *Confirm New Password* window, confirm the password and press **[Enter]**.

! IMPORTANT

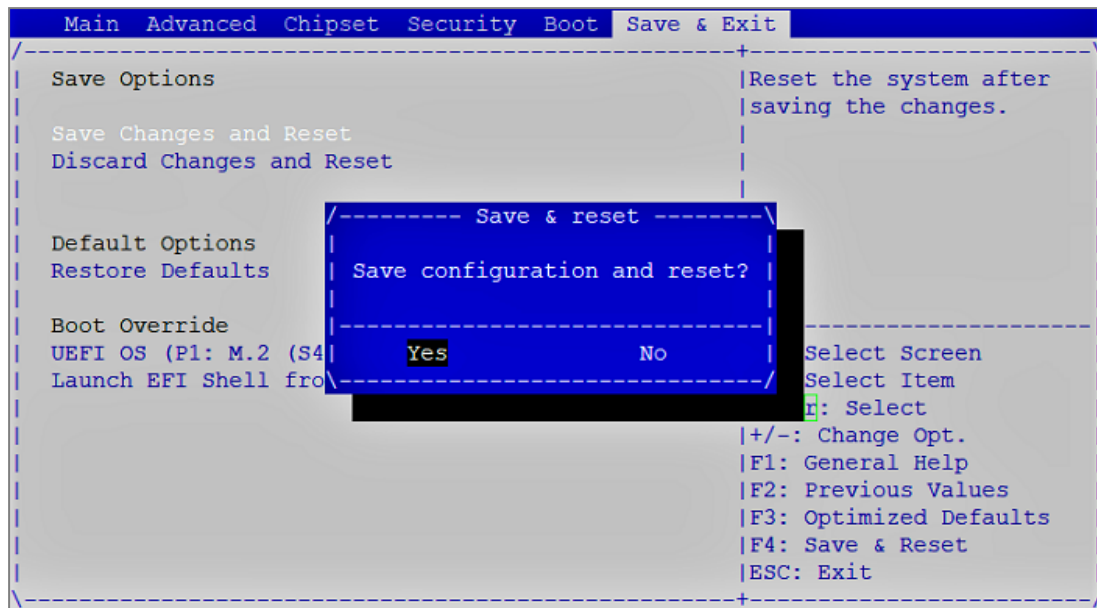
The password you set must be kept in a safe and secure location. If you misplace your password, you will no longer be able to update the SNS firewall's UEFI. Stormshield will not be able to help you recover this password.



8. Press **[Esc]** and go to the **Save & Exit** tab.
9. Select **Save Changes and Reset** and press **[Enter]**.

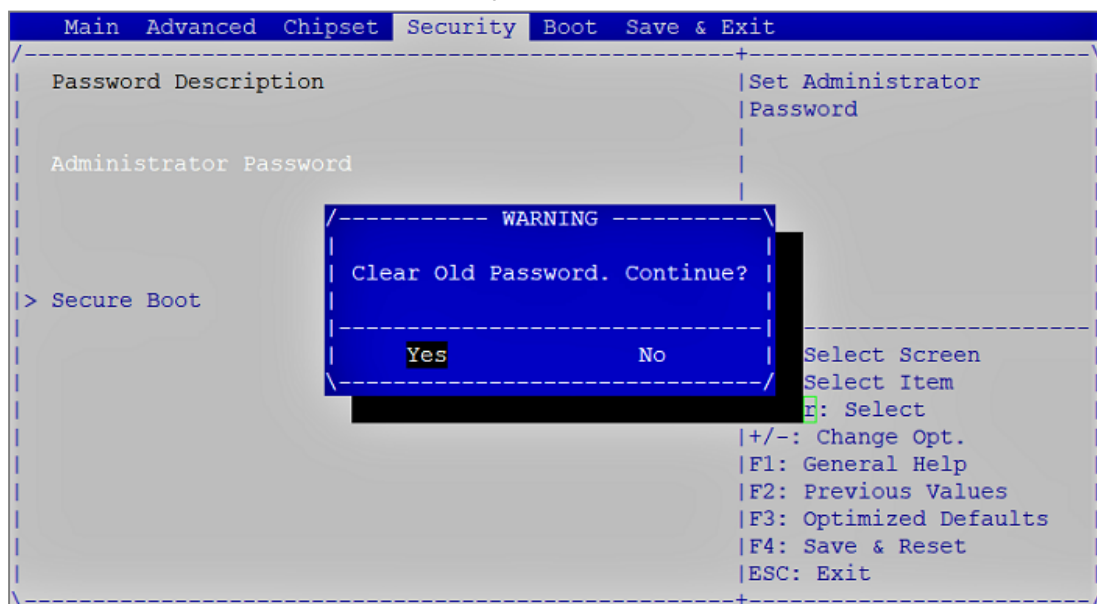


10. In the *Save & Reset* window, select **Yes** then press **[Enter]**.



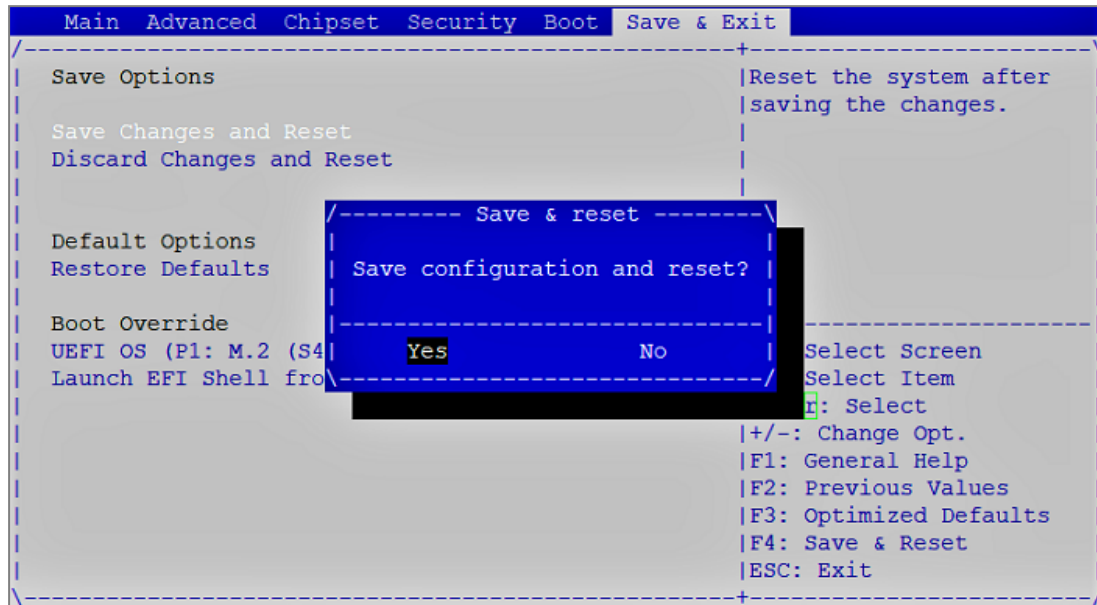
Disabling password protection in the UEFI control panel

1. Connect a computer to the SNS firewall using a USB-A to USB-C cable.
2. Open the terminal emulator and enter the serial port and baud rate (115200).
3. Start or restart the SNS firewall and immediately press **[Del]** several times to stop the SNS firewall startup sequence.
4. Enter the password to access the UEFI control panel.
5. Go to the **Security** tab by using the arrow keys.
6. Select **Administrator Password** and press **[Enter]**.
7. In the *Enter Current Password* window, enter the current password and press **[Enter]**.
8. In the *Create New Password* window, leave the field empty and press **[Enter]**.
9. In the *WARNING* window, select **Yes** then press **[Enter]**.





10. Press **[Esc]** and go to the **Save & Exit** tab.
11. Select **Save Changes and Reset** and press **[Enter]**.
12. In the *Save & Reset* window, select **Yes** then press **[Enter]**.





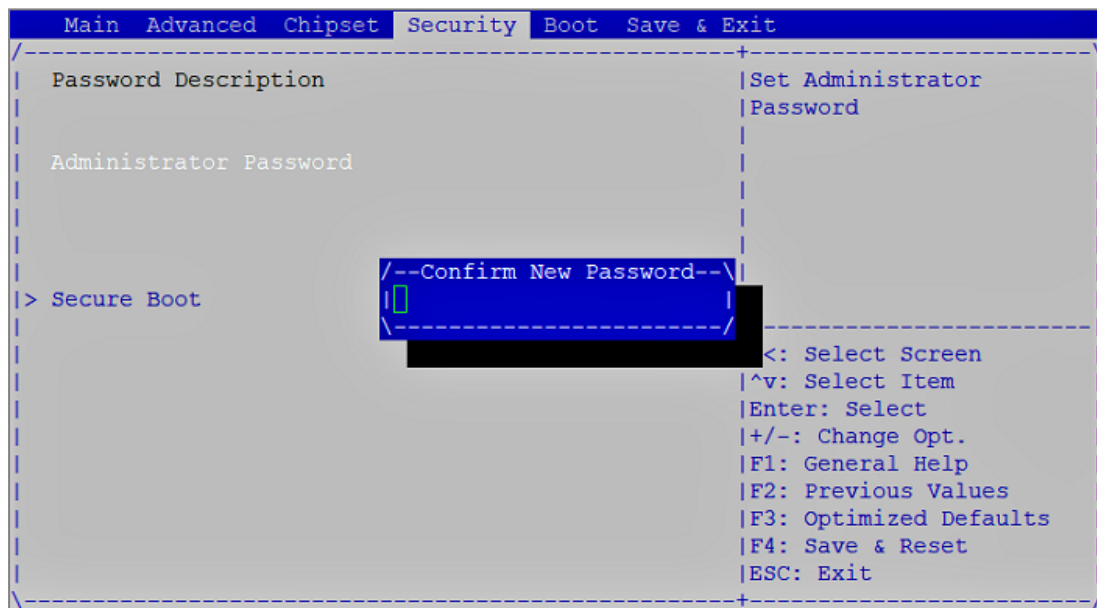
SN-M-Series-520

Enabling password protection in the UEFI control panel

1. Connect a computer to the SNS firewall using a USB-A to USB-C cable.
2. Open the terminal emulator and enter the serial port and baud rate {115200}.
3. Start or restart the SNS firewall and immediately press **[Del]** several times to stop the SNS firewall startup sequence.
4. Go to the **Security** tab by using the arrow keys.
5. Select **Administrator Password** and press **[Enter]**.
6. In the *Create New Password* window, enter a password of your choice and press **[Enter]**.
7. In the *Confirm New Password* window, confirm the password and press **[Enter]**.

! IMPORTANT

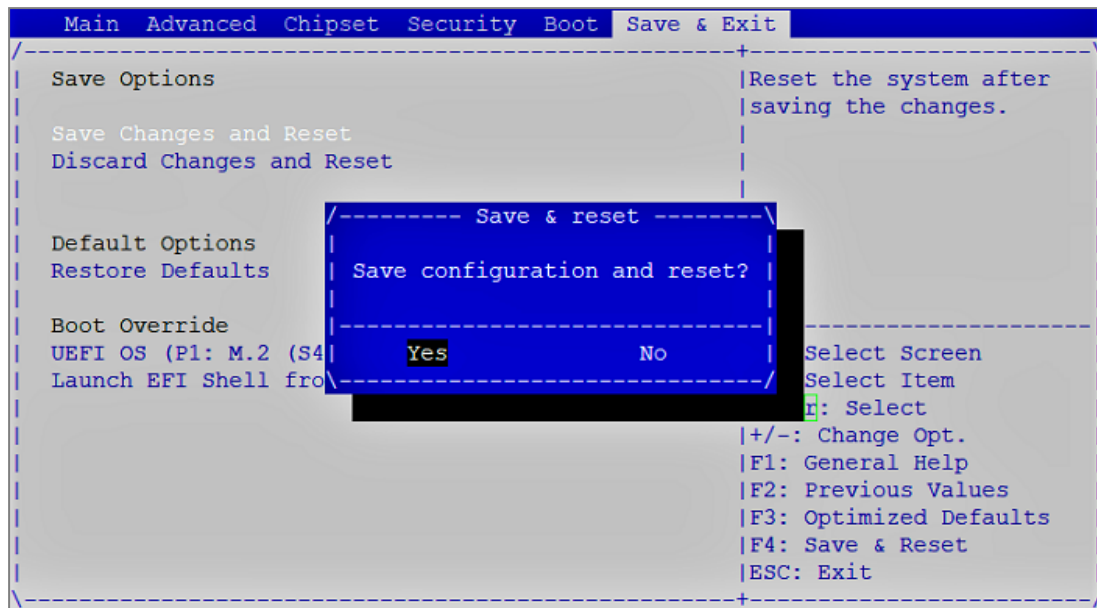
The password you set must be kept in a safe and secure location. If you misplace your password, you will no longer be able to update the SNS firewall's UEFI. Stormshield will not be able to help you recover this password.



8. Press **[Esc]** and go to the **Save & Exit** tab.
9. Select **Save Changes and Reset** and press **[Enter]**.

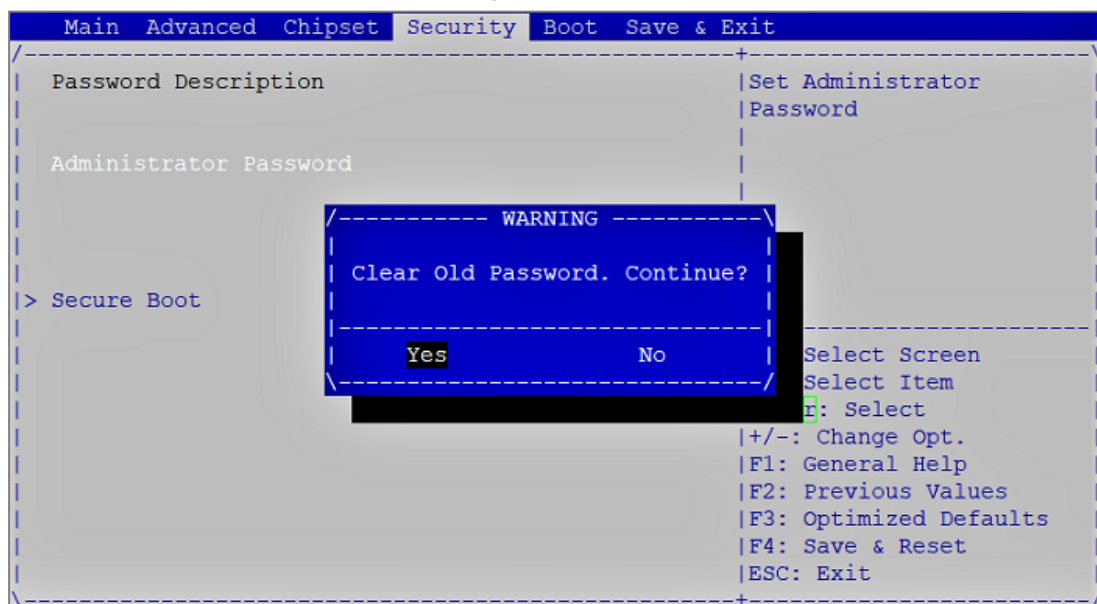


10. In the *Save & Reset* window, select **Yes** then press **[Enter]**.



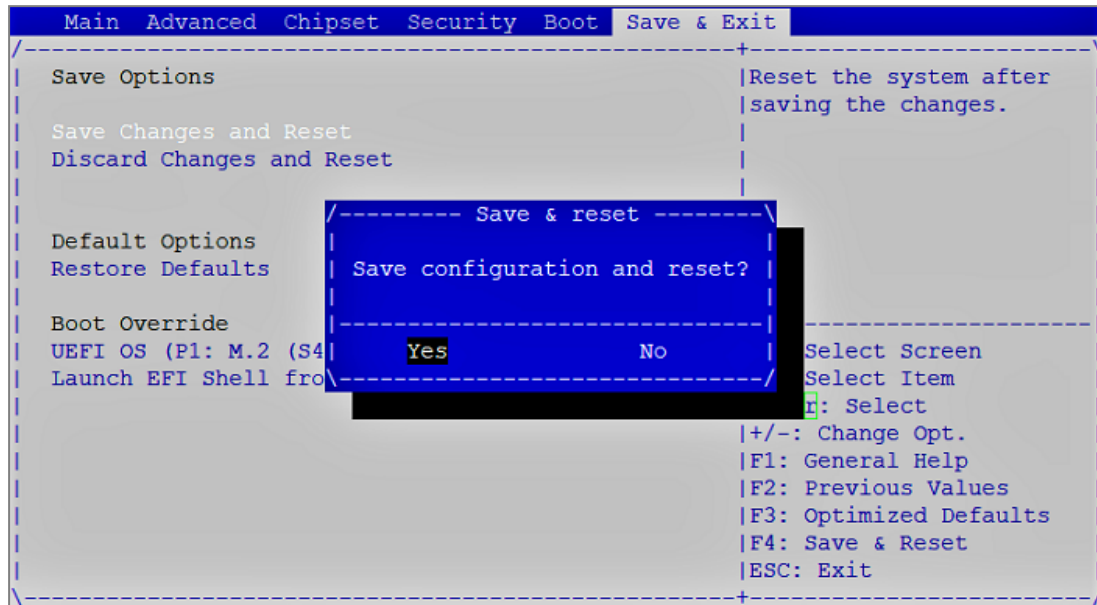
Disabling password protection in the UEFI control panel

1. Connect a computer to the SNS firewall using a USB-A to USB-C cable.
2. Open a terminal emulator and enter the serial port and baud rate (115200).
3. Start or restart the SNS firewall and immediately press **[Del]** several times to stop the SNS firewall startup sequence.
4. Enter the password to access the UEFI control panel.
5. Go to the **Security** tab by using the arrow keys.
6. Select **Administrator Password** and press **[Enter]**.
7. In the *Enter Current Password* window, enter the current password and press **[Enter]**.
8. In the *Create New Password* window, leave the field empty and press **[Enter]**.
9. In the *WARNING* window, select **Yes** then press **[Enter]**.





10. Press **[Esc]** and go to the **Save & Exit** tab.
11. Select **Save Changes and Reset** and press **[Enter]**.
12. In the *Save & Reset* window, select **Yes** then press **[Enter]**.





SN-M-Series-720 and SN-M-Series-920

Enabling password protection in the UEFI control panel

1. Connect the computer to the SNS firewall using the USB-A to USB-C cable.
2. Open the terminal emulator and enter the serial port and baud rate (115200).
3. Start or restart the SNS firewall and immediately press **[Del]** several times to stop the SNS firewall startup sequence.
4. Go to the **Security** tab by using the arrow keys.
5. Select **Administrator Password** and press **[Enter]**.
6. In the *Create New Password* window, enter a password of your choice and press **[Enter]**.
7. In the *Confirm New Password* window, confirm the password and press **[Enter]**.

! IMPORTANT

The password you set must be kept in a safe and secure location. If you misplace your password, you will no longer be able to update the SNS firewall's UEFI. Stormshield will not be able to help you recover this password.

```
Main Advanced Chipset Security Boot Save & Exit
+-----+
| Password Description | Set Administrator |
|                      | Password         |
|                      |                 |
| Administrator Password |                |
|                      |                |
> Secure Boot          |                |
                        |--Confirm New Password--\
|*****█              |
\-----\
                                     <: Select Screen
                                     ^v: Select Item
                                     Enter: Select
                                     +/-: Change Opt.
                                     F1: General Help
                                     F2: Previous Values
                                     F3: Optimized Defaults
                                     F4: Save & Exit
                                     ESC: Exit
```

- Press **[Esc]** and go to the **Save & Exit** tab.
- Select **Save Changes and Reset** and press **[Enter]**.



10. In the *Save & Reset* window, select **Yes** then press **[Enter]**.

```

Main Advanced Chipset Security Boot Save & Exit
-----+-----
| Save Options                               |Reset the system after|
| Save Changes and Exit                     |saving the changes.  |
| Discard Changes and Exit                  |                     |
|                                           |                     |
| Save Changes and Reset                    |                     |
| Discard Changes and /----- Save & reset -----\
|                                           |                     |
| Default Options                           | Save configuration and reset? |
| Restore Defaults                         |                     |
|                                           |                     |
| Boot Override                            | Yes          No          | Select Screen
| UEFI OS (P4: M.2 (S4)\-----+-----/      | Select Item
| Launch EFI Shell from                    | g: Select
|                                           | +/=: Change Opt.
|                                           | F1: General Help
|                                           | F2: Previous Values
|                                           | F3: Optimized Defaults
|                                           | F4: Save & Exit
|                                           | ESC: Exit
|                                           |
+-----+-----

```

Disabling password protection in the UEFI control panel

1. Connect the computer to the SNS firewall using the USB-A to USB-C cable.
2. Open the terminal emulator and enter the serial port and baud rate (115200).
3. Start or restart the SNS firewall and immediately press **[Del]** several times to stop the SNS firewall startup sequence.
4. Enter the password to access the UEFI control panel.
5. Go to the **Security** tab by using the arrow keys.
6. Select **Administrator Password** and press **[Enter]**.
7. In the *Enter Current Password* window, enter the current password and press **[Enter]**.
8. In the *Create New Password* window, leave the field empty and press **[Enter]**.
9. In the *WARNING* window, select **Yes** then press **[Enter]**.

```

Main Advanced Chipset Security Boot Save & Exit
-----+-----
| Password Description                       |Set Administrator    |
|                                           |Password             |
| Administrator Password                    |                     |
|                                           |                     |
|> Secure Boot                            | /----- WARNING -----\
|                                           | Clear Old Password. Continue? |
|                                           |                     |
|                                           | Yes          No          | Select Screen
|                                           | \-----+-----/      | Select Item
|                                           | g: Select
|                                           | +/=: Change Opt.
|                                           | F1: General Help
|                                           | F2: Previous Values
|                                           | F3: Optimized Defaults
|                                           | F4: Save & Exit
|                                           | ESC: Exit
|                                           |
+-----+-----

```




10. Press **[Esc]** and go to the **Save & Exit** tab.
11. Select **Save Changes and Reset** and press **[Enter]**.
12. In the *Save & Reset* window, select **Yes** then press **[Enter]**.

```

Main  Advanced  Chipset  Security  Boot  Save & Exit
/-----+-----\
| Save Options                                     |Reset the system after|
| Save Changes and Exit                           |saving the changes. |
| Discard Changes and Exit                         |                    |
|                                                    |                    |
| Save Changes and Reset                           |                    |
| Discard Changes and /----- Save & reset -----\|
|                                                    |                    |
| Default Options                                | Save configuration and reset? |
| Restore Defaults                               |                    |
|                                                    |                    |
| Boot Override                                  | Yes          No          | Select Screen
| UEFI OS (P4: M.2 (S4\-----/                | Select Item
| Launch EFI Shell from                        |  G: Select
|                                                    |                    |
|                                                    | +/=: Change Opt.
|                                                    | F1: General Help
|                                                    | F2: Previous Values
|                                                    | F3: Optimized Defaults
|                                                    | F4: Save & Exit
|                                                    | ESC: Exit
\-----+-----/
```



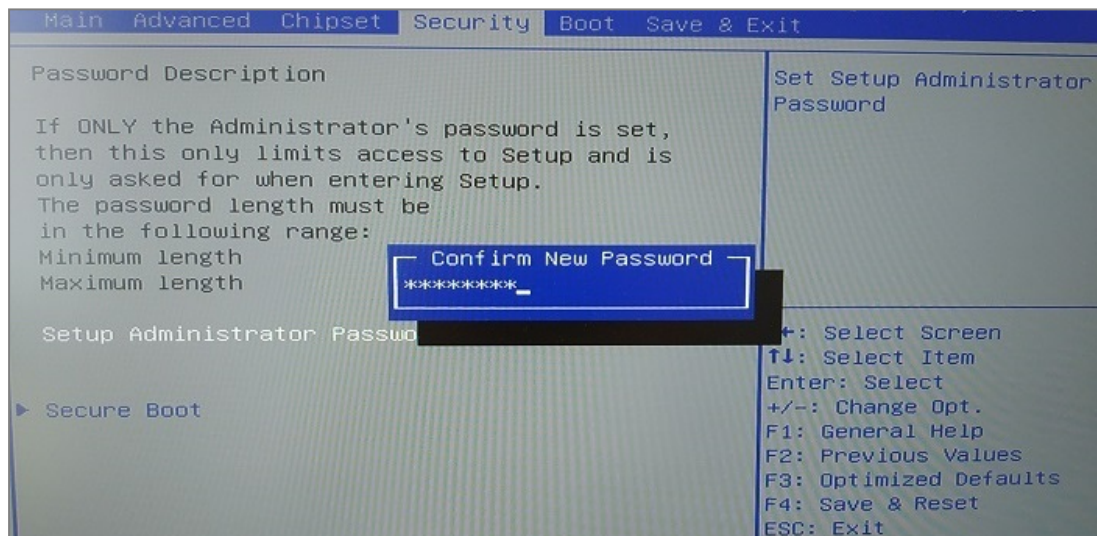
SN1100 and SN3100

Enabling password protection in the UEFI control panel

1. Connect the computer to the SNS firewall using the RJ45 to RS232 serial cable.
2. Open the terminal emulator and enter the serial port and baud rate (115200).
3. Start or restart the SNS firewall and immediately press **[Del]** several times to stop the SNS firewall startup sequence.
4. Go to the **Security** tab by using the arrow keys.
5. Select **Setup Administrator Password** and press **[Enter]**.
6. In the *Create New Password* window, enter a password of your choice and press **[Enter]**.
7. In the *Confirm New Password* window, confirm the password and press **[Enter]**.

! IMPORTANT

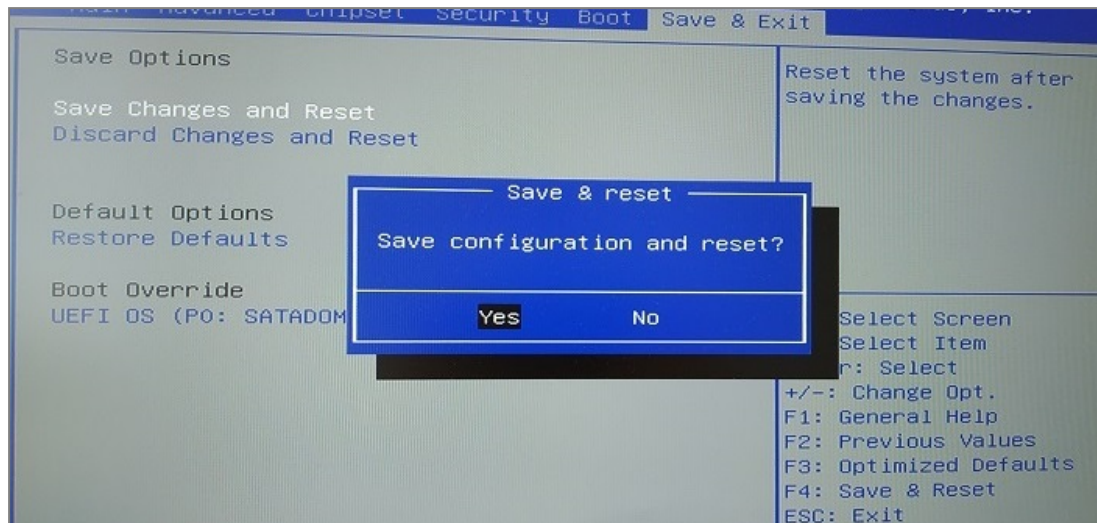
The password you set must be kept in a safe and secure location. If you misplace your password, you will no longer be able to update the SNS firewall's UEFI. Stormshield will not be able to help you recover this password.



8. Press **[Esc]** and go to the **Save & Exit** tab.
9. Select **Save Changes and Reset** and press **[Enter]**.

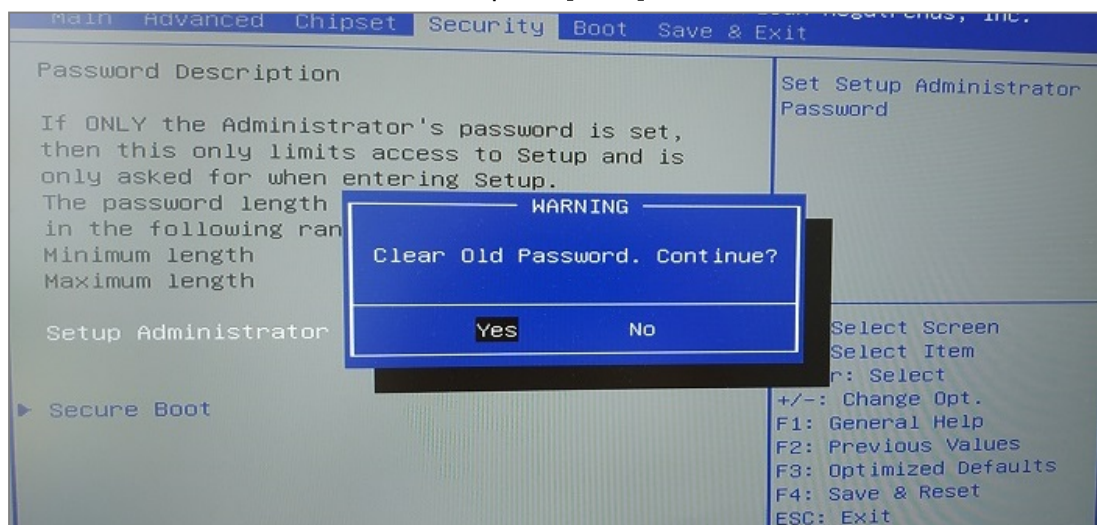


10. In the *Save & Reset* window, select **Yes** then press **[Enter]**.



Disabling password protection in the UEFI control panel

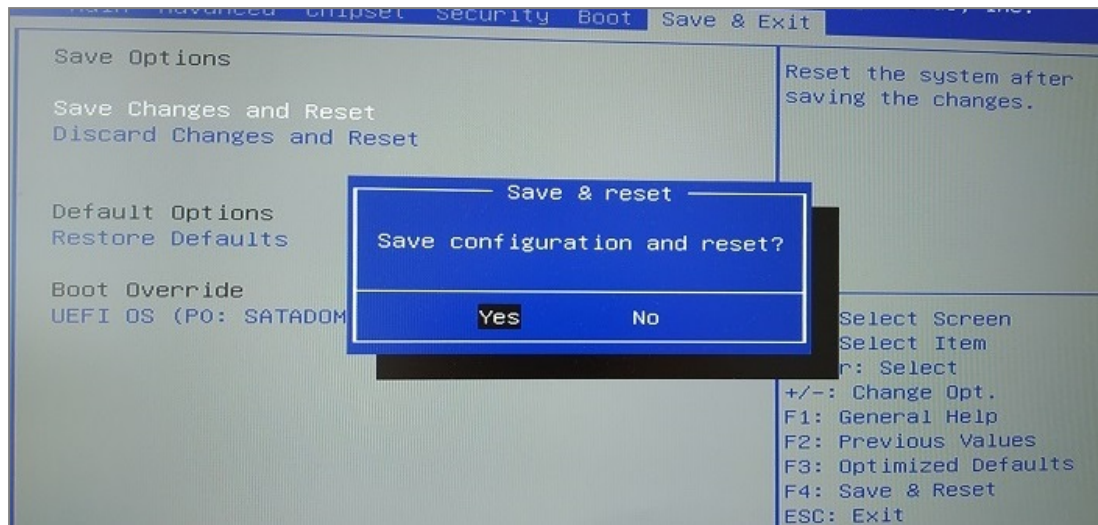
1. Connect the computer to the SNS firewall using the RJ45 to RS232 serial cable.
2. Open the terminal emulator and enter the serial port and baud rate (115200).
3. Start or restart the SNS firewall and immediately press **[Del]** several times to stop the SNS firewall startup sequence.
4. Enter the password to access the UEFI control panel.
5. Go to the **Security** tab by using the arrow keys.
6. Select **Setup Administrator Password** and press **[Enter]**.
7. In the *Enter Current Password* window, enter the current password and press **[Enter]**.
8. In the *Create New Password* window, leave the field empty and press **[Enter]**.
9. In the **WARNING** window, select **Yes** then press **[Enter]**.



10. Press **[Esc]** and go to the **Save & Exit** tab.
11. Select **Save Changes and Reset** and press **[Enter]**.



12. In the *Save & Reset* window, select **Yes** then press **[Enter]**.





SN-L-Series-2200 and SN-L-Series-3200

Enabling password protection in the UEFI control panel

1. Connect the computer to the SNS firewall using the USB-A to USB-C cable, or the RJ45 to DB9 serial cable [RS232].
2. Open the terminal emulator and enter the serial port and baud rate [115200].
3. Start or restart the SNS firewall and immediately press **[Del]** several times to stop the SNS firewall startup sequence.
4. Go to the **Security** tab by using the arrow keys.
5. Select **Administrator Password** and press **[Enter]**.
6. In the *Create New Password* window, enter a password of your choice and press **[Enter]**.
7. In the *Confirm New Password* window, confirm the password and press **[Enter]**.

! IMPORTANT

The password you set must be kept in a safe and secure location. If you misplace your password, you will no longer be able to update the SNS firewall's UEFI. Stormshield will not be able to help you recover this password.

```

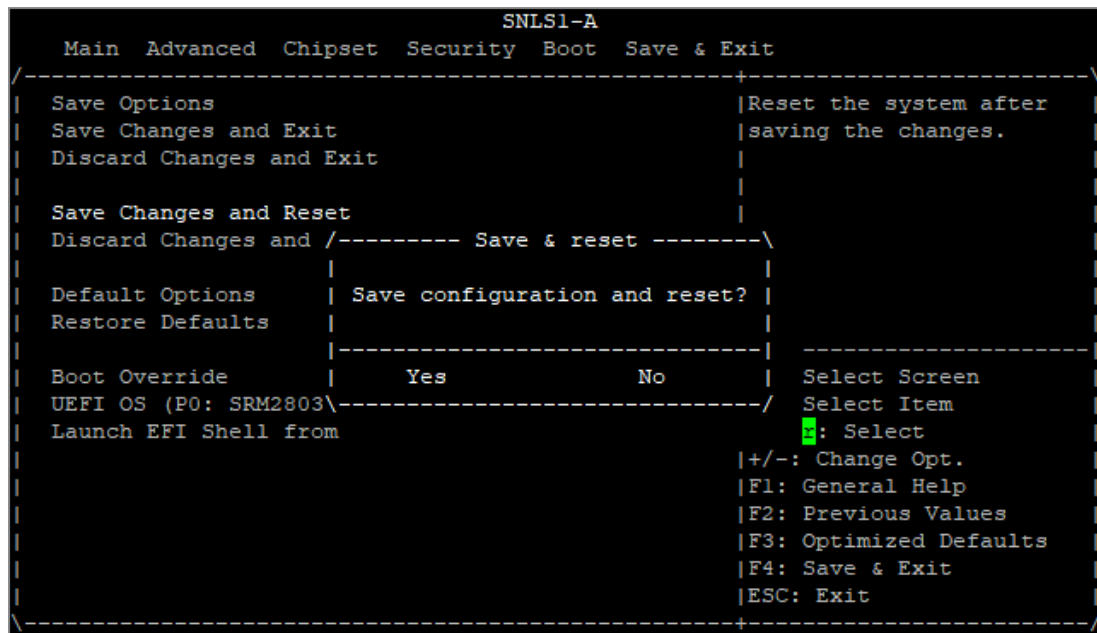
SNLS1-A
Main Advanced Chipset Security Boot Save & Exit
/-----\
| Password Description | Set Administrator |
|                      | Password         |
|                      |                  |
| Administrator Password |                  |
|                      |                  |
|                      | /--Create New Password---\ |
|                      | *****          |
| HDD Security Configurati\-----/
> P4:INTEL SSDSC2KB240GZ      <: Select Screen
> P5:INTEL SSDSC2KB240GZ    ^v: Select Item
                             Enter: Select
> Secure Boot               +/-: Change Opt.
                             F1: General Help
                             F2: Previous Values
                             F3: Optimized Defaults
                             F4: Save & Exit
                             ESC: Exit
\-----\

```

- Press **[Esc]** and go to the **Save & Exit** tab.
- Select **Save Changes and Reset** and press **[Enter]**.



10. In the *Save & Reset* window, select **Yes** then press **[Enter]**.



Disabling password protection in the UEFI control panel

1. Connect the computer to the SNS firewall using the USB-A to USB-C cable.
2. Open the terminal emulator and enter the serial port and baud rate (115200).
3. Start or restart the SNS firewall and immediately press **[Del]** several times to stop the SNS firewall startup sequence.
4. Enter the password to access the UEFI control panel.
5. Go to the **Security** tab by using the arrow keys.
6. Select **Administrator Password** and press **[Enter]**.
7. In the *Enter Current Password* window, enter the current password and press **[Enter]**.
8. In the *Create New Password* window, leave the field empty and press **[Enter]**.



9. In the **WARNING** window, select **Yes** then press **[Enter]**.

```
SNLS1-A
Main  Advanced  Chipset  Security  Boot  Save & Exit
-----
| Disable Block Sid          [Disabled]          | Set Administrator |
| Password Description       | Password         |
|
| Administrator Passwo/----- WARNING -----\
|
| Clear Old Password. Continue? |
|
|-----|
| HDD Security Configu| Yes              No | Select Screen
|> P0:SRM28032GPCM2BD2 \-----/ Select Item
|> P4:INTEL SSDSC2KB240GZ | : Select
|> P5:INTEL SSDSC2KB240GZ | +/-: Change Opt.
|                          | F1: General Help
|                          | F2: Previous Values
|                          | F3: Optimized Defaults
|> Secure Boot           | F4: Save & Exit
|                          | ESC: Exit
|-----|
```

10. Press **[Esc]** and go to the **Save & Exit** tab.
11. Select **Save Changes and Reset** and press **[Enter]**.
12. In the **Save & Reset** window, select **Yes** then press **[Enter]**.

```
SNLS1-A
Main  Advanced  Chipset  Security  Boot  Save & Exit
-----
| Save Options               | Reset the system after |
| Save Changes and Exit     | saving the changes.   |
| Discard Changes and Exit  |
|
| Save Changes and Reset    |
| Discard Changes and /----- Save & reset -----\
|
| Default Options          | Save configuration and reset? |
| Restore Defaults         |
|
| Boot Override            | Yes              No | Select Screen
| UEFI OS (P0: SRM2803\-----/ Select Item
| Launch EFI Shell from    | : Select
|                          | +/-: Change Opt.
|                          | F1: General Help
|                          | F2: Previous Values
|                          | F3: Optimized Defaults
|                          | F4: Save & Exit
|                          | ESC: Exit
|-----|
```



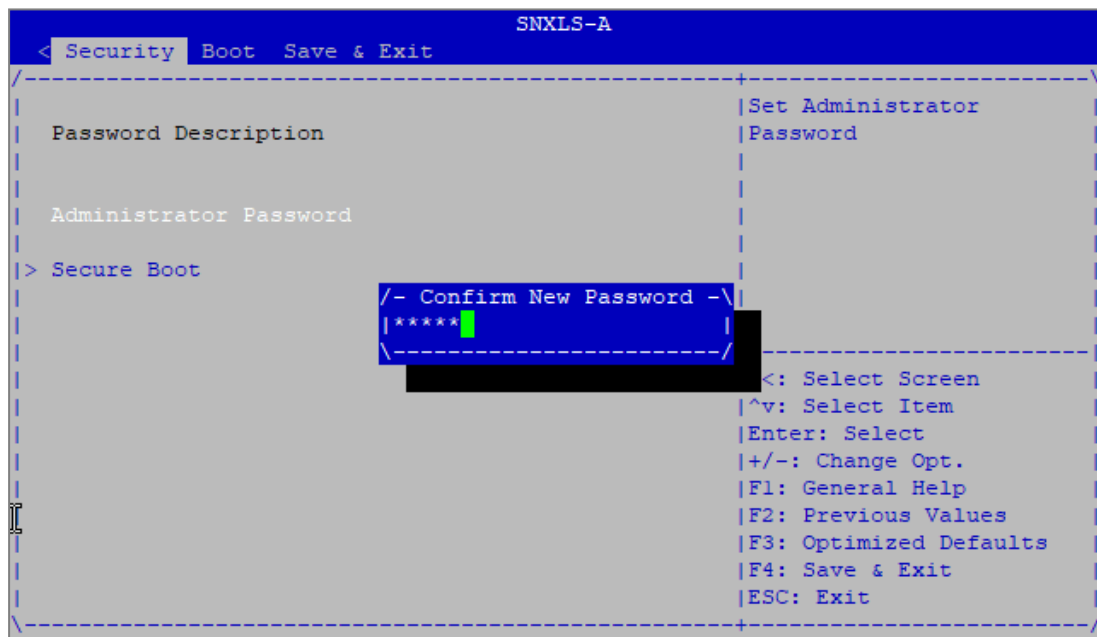
SN-XL-Series-5200 and SN-XL-Series-6200

Enabling password protection in the UEFI control panel

1. Connect the computer to the SNS firewall using the USB-A to USB-C cable, or the RJ45 to DB9 serial cable [RS232].
2. Open the terminal emulator and enter the serial port and baud rate [115200].
3. Start or restart the SNS firewall and immediately press **[Del]** several times to stop the SNS firewall startup sequence.
4. Go to the **Security** tab by using the arrow keys.
5. Select **Administrator Password** and press **[Enter]**.
6. In the *Create New Password* window, enter a password of your choice and press **[Enter]**.
7. In the *Confirm New Password* window, confirm the password and press **[Enter]**.

! IMPORTANT

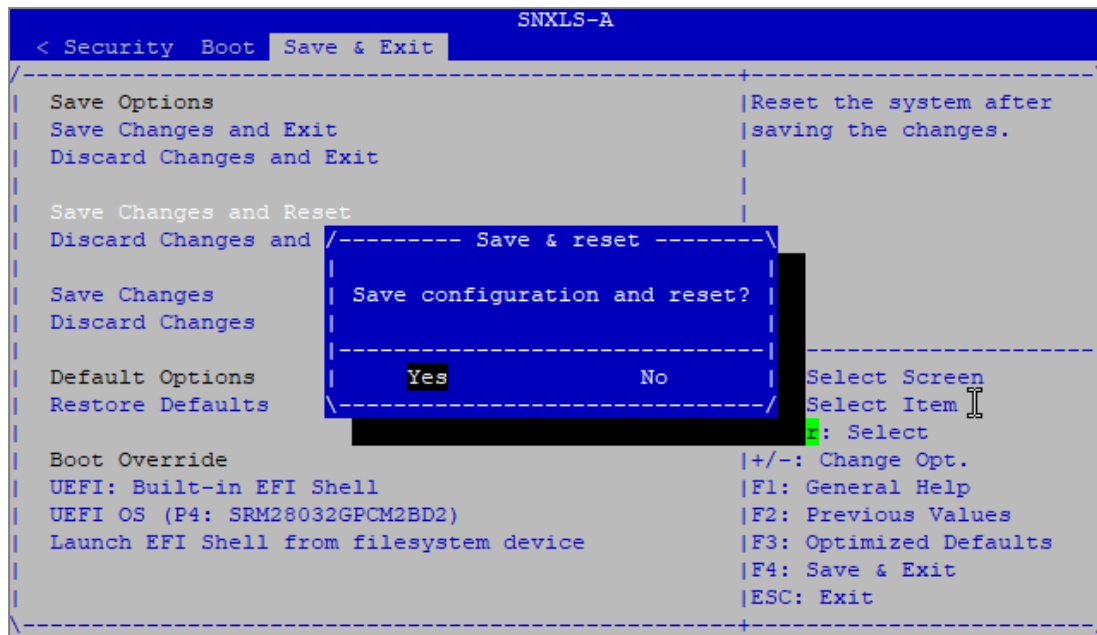
The password you set must be kept in a safe and secure location. If you misplace your password, you will no longer be able to update the SNS firewall's UEFI. Stormshield will not be able to help you recover this password.



8. Press **[Esc]** and go to the **Save & Exit** tab.
9. Select **Save Changes and Reset** and press **[Enter]**.



10. In the *Save & Reset* window, select **Yes** then press **[Enter]**.

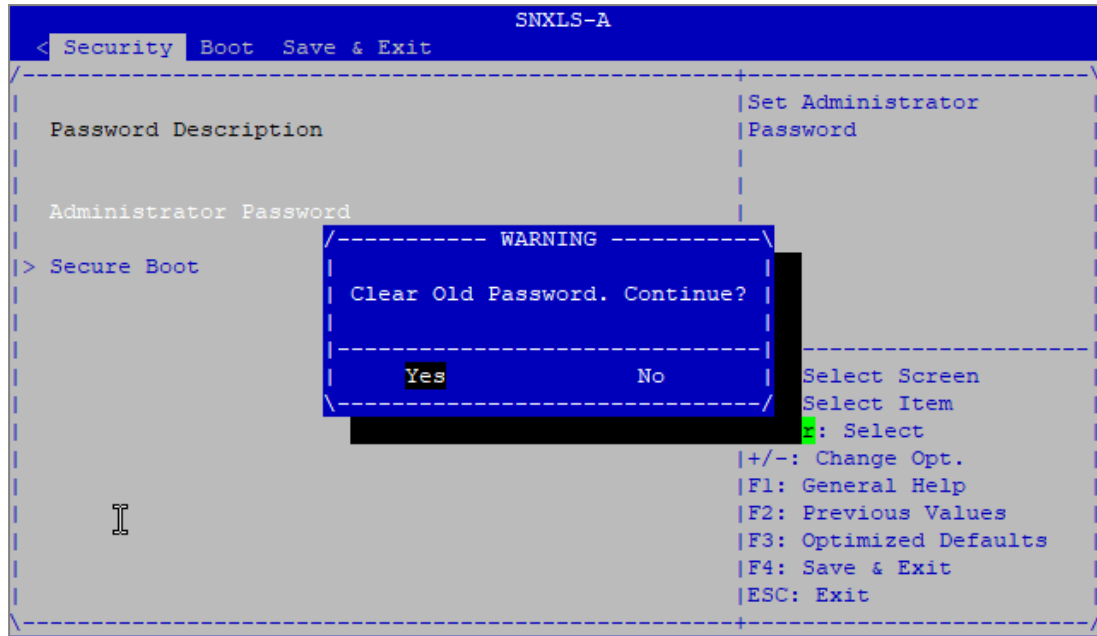


Disabling password protection in the UEFI control panel

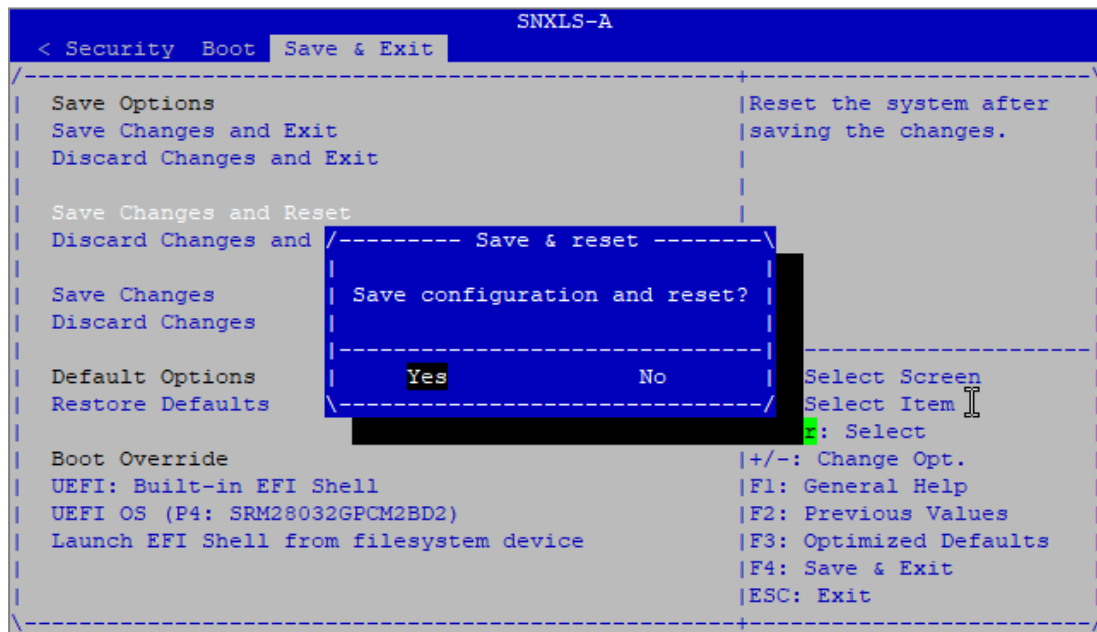
1. Connect the computer to the SNS firewall using the USB-A to USB-C cable.
2. Open the terminal emulator and enter the serial port and baud rate (115200).
3. Start or restart the SNS firewall and immediately press **[Del]** several times to stop the SNS firewall startup sequence.
4. Enter the password to access the UEFI control panel.
5. Go to the **Security** tab by using the arrow keys.
6. Select **Administrator Password** and press **[Enter]**.
7. In the *Enter Current Password* window, enter the current password and press **[Enter]**.
8. In the *Create New Password* window, leave the field empty and press **[Enter]**.



9. In the **WARNING** window, select **Yes** then press **[Enter]**.



10. Press **[Esc]** and go to the **Save & Exit** tab.
11. Select **Save Changes and Reset** and press **[Enter]**.
12. In the **Save & Reset** window, select **Yes** then press **[Enter]**.





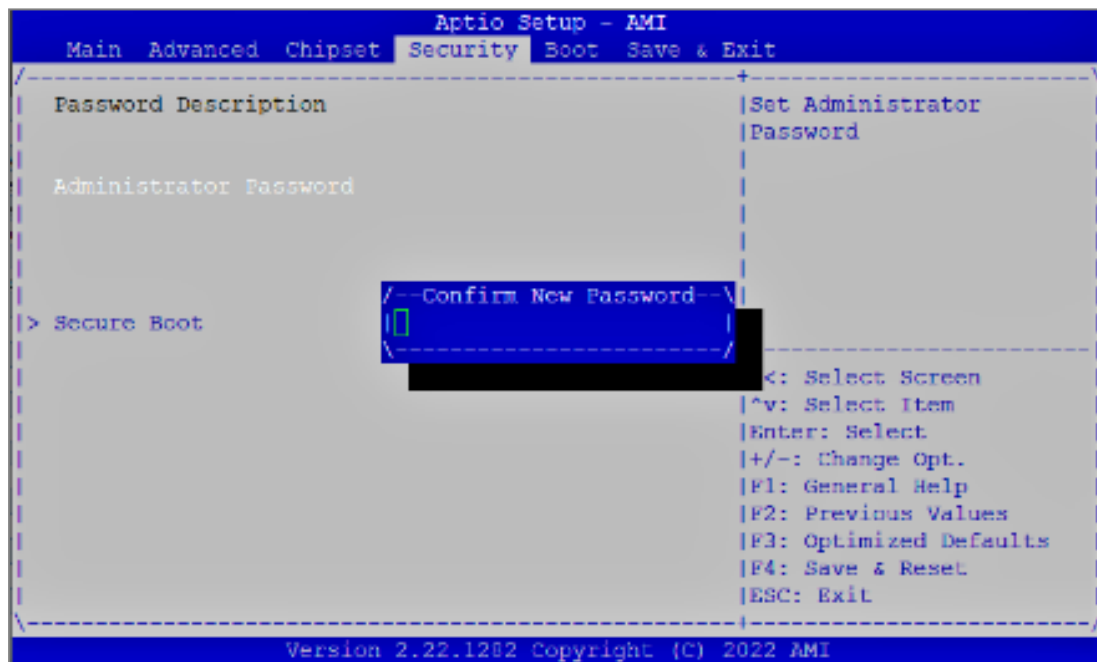
SNi10

Enabling password protection in the UEFI control panel

1. Connect the computer to the SNS firewall using the USB-A to USB-C cable.
2. Open the terminal emulator and enter the serial port and baud rate [115200].
3. Start or restart the SNS firewall and immediately press **[Del]** several times to stop the SNS firewall startup sequence.
4. Go to the **Security** tab by using the arrow keys.
5. Select **Administrator Password** and press **[Enter]**.
6. In the *Create New Password* window, enter a password of your choice and press **[Enter]**.
7. In the *Confirm New Password* window, confirm the password and press **[Enter]**.

! IMPORTANT

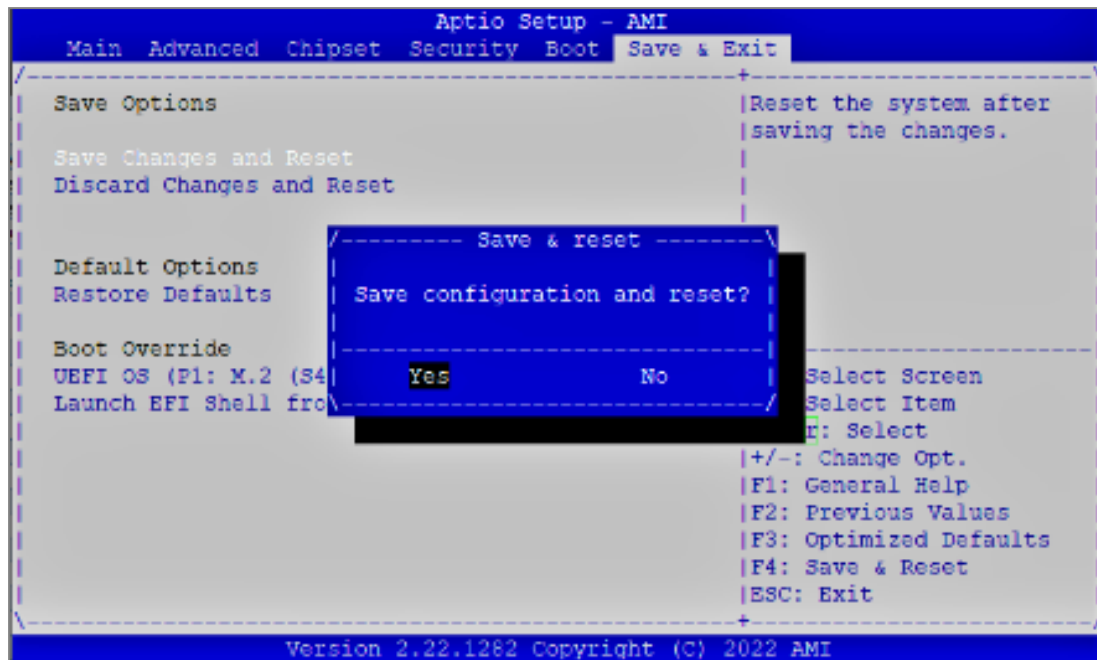
The password you set must be kept in a safe and secure location. If you misplace your password, you will no longer be able to update the SNS firewall's UEFI. Stormshield will not be able to help you recover this password.



8. Press **[Esc]** and go to the **Save & Exit** tab.
9. Select **Save Changes and Reset** and press **[Enter]**.



10. In the *Save & Reset* window, select **Yes** then press **[Enter]**.

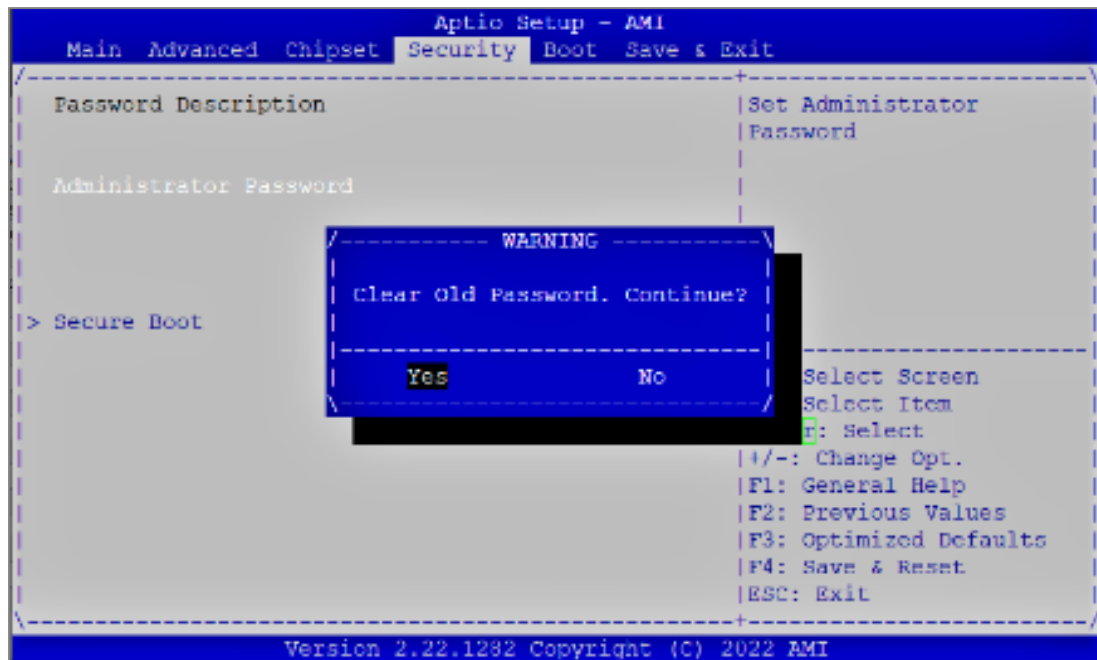


Disabling password protection in the UEFI control panel

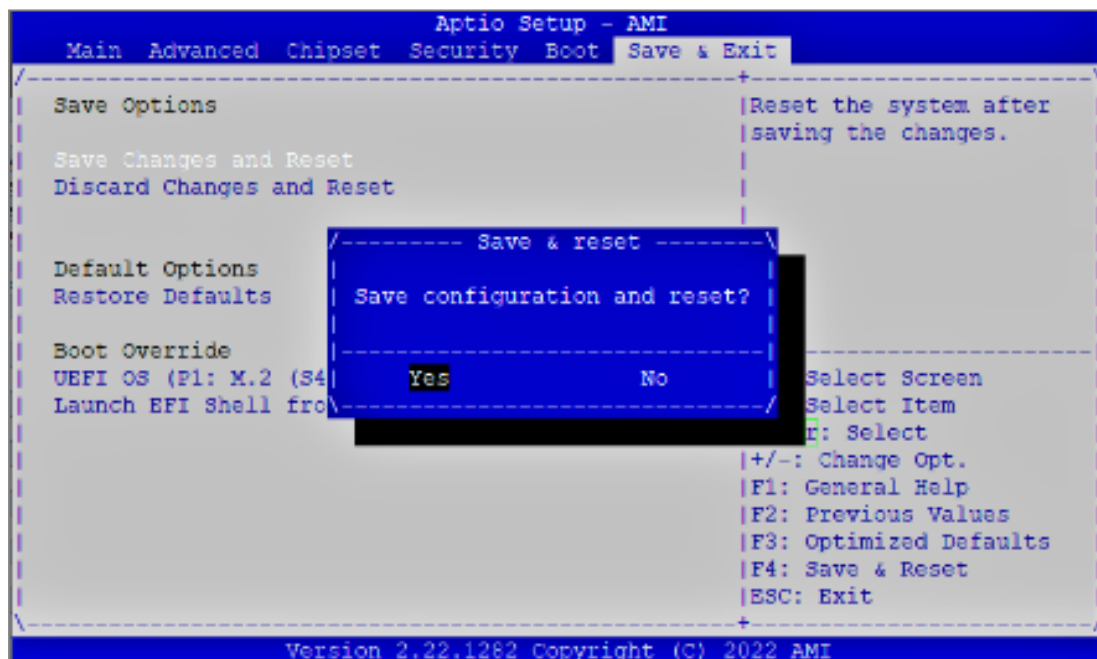
1. Connect the computer to the SNS firewall using the USB-A to USB-C cable.
2. Open the terminal emulator and enter the serial port and baud rate (115200).
3. Start or restart the SNS firewall and immediately press **[Del]** several times to stop the SNS firewall startup sequence.
4. Enter the password to access the UEFI control panel.
5. Go to the **Security** tab by using the arrow keys.
6. Select **Administrator Password** and press **[Enter]**.
7. In the *Create New Password* window, leave the field empty and press **[Enter]**.



8. In the **WARNING** window, select **Yes** then press **[Enter]**.



9. Press **[Esc]** and go to the **Save & Exit** tab.
10. Select **Save Changes and Reset** and press **[Enter]**.
11. In the **Save & Reset** window, select **Yes** then press **[Enter]**.





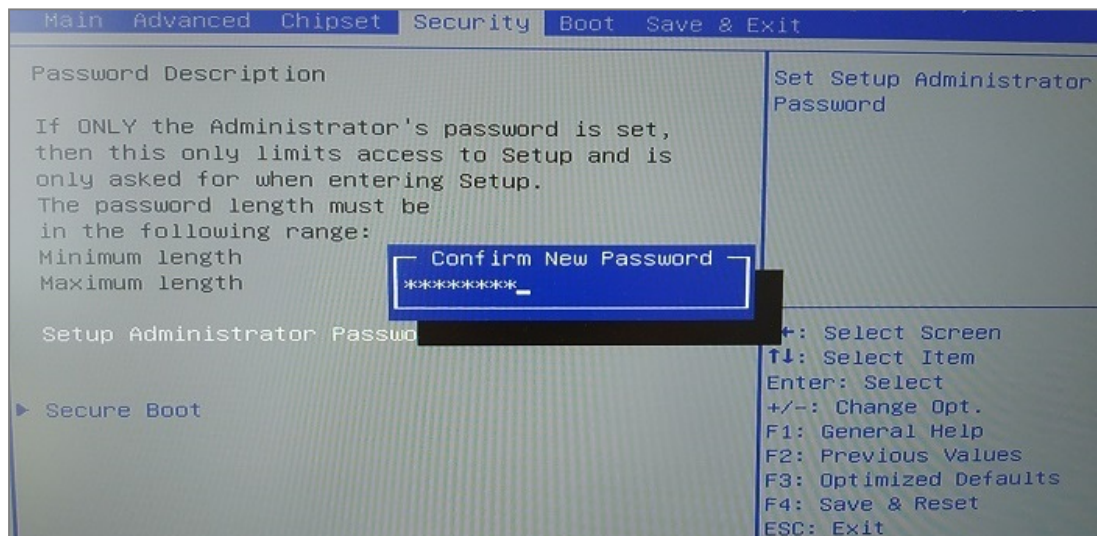
SNi20

Enabling password protection in the UEFI control panel

1. Connect the computer to the SNS firewall using the RJ45 to RS232 serial cable.
2. Open the terminal emulator and enter the serial port and baud rate (115200).
3. Start or restart the SNS firewall and immediately press **[Del]** several times to stop the SNS firewall startup sequence.
4. Go to the **Security** tab by using the arrow keys.
5. Select **Setup Administrator Password** and press **[Enter]**.
6. In the *Create New Password* window, enter a password of your choice and press **[Enter]**.
7. In the *Confirm New Password* window, confirm the password and press **[Enter]**.

! IMPORTANT

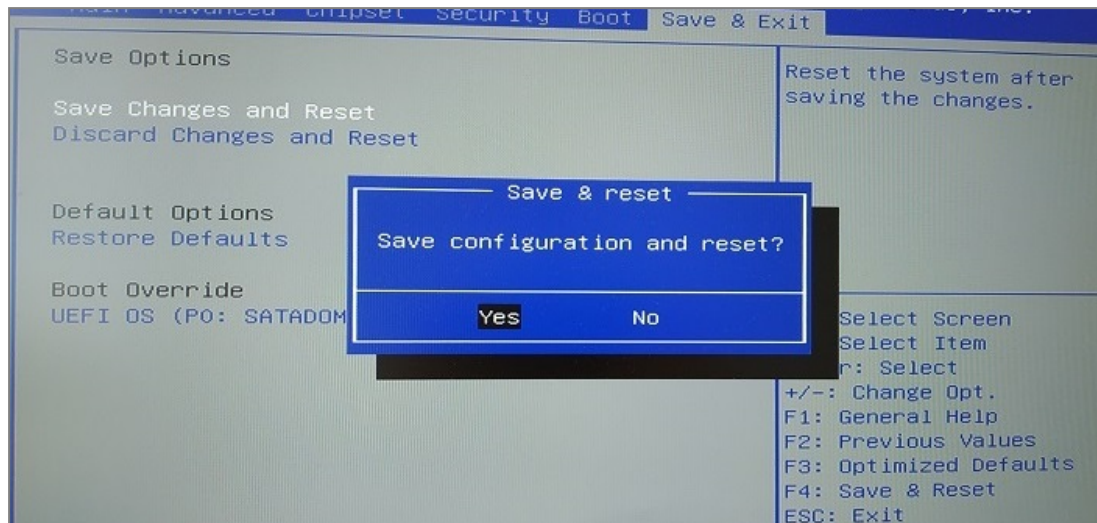
The password you set must be kept in a safe and secure location. If you misplace your password, you will no longer be able to update the SNS firewall's UEFI. Stormshield will not be able to help you recover this password.



8. Press **[Esc]** and go to the **Save & Exit** tab.
9. Select **Save Changes and Reset** and press **[Enter]**.

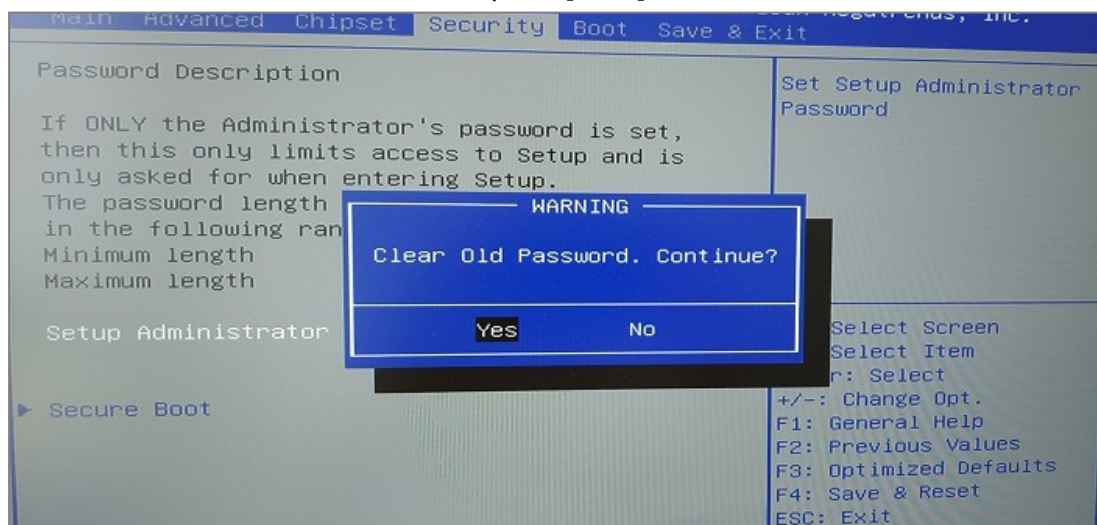


10. In the *Save & Reset* window, select **Yes** then press **[Enter]**.



Disabling password protection in the UEFI control panel

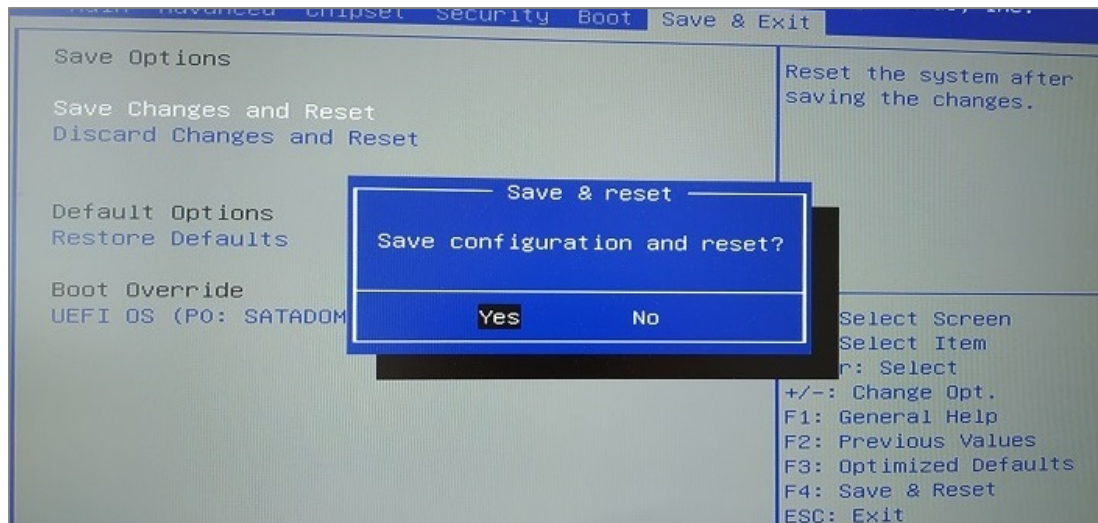
1. Connect the computer to the SNS firewall using the RJ45 to RS232 serial cable.
2. Open the terminal emulator and enter the serial port and baud rate (115200).
3. Start or restart the SNS firewall and immediately press **[Del]** several times to stop the SNS firewall startup sequence.
4. Enter the password to access the UEFI control panel.
5. Go to the **Security** tab by using the arrow keys.
6. Select **Setup Administrator Password** and press **[Enter]**.
7. In the *Enter Current Password* window, enter the current password and press **[Enter]**.
8. In the *Create New Password* window, leave the field empty and press **[Enter]**.
9. In the **WARNING** window, select **Yes** then press **[Enter]**.



10. Press **[Esc]** and go to the **Save & Exit** tab.
11. Select **Save Changes and Reset** and press **[Enter]**.



12. In the *Save & Reset* window, select **Yes** then press **[Enter]**.





Further reading

If you have enabled password protection on the control panel of your SNS firewall's UEFI, you can proceed by enabling Secure Boot.

 [Managing Secure Boot in SNS firewalls' UEFI](#)

Additional information and answers to some of your questions may be found in the [Stormshield knowledge base](#) (authentication required).



STORMSHIELD

documentation@stormshield.eu

All images in this document are for representational purposes only, actual products may differ.

Copyright © Stormshield 2025. All rights reserved. All other company and product names contained in this document are trademarks or registered trademarks of their respective companies.